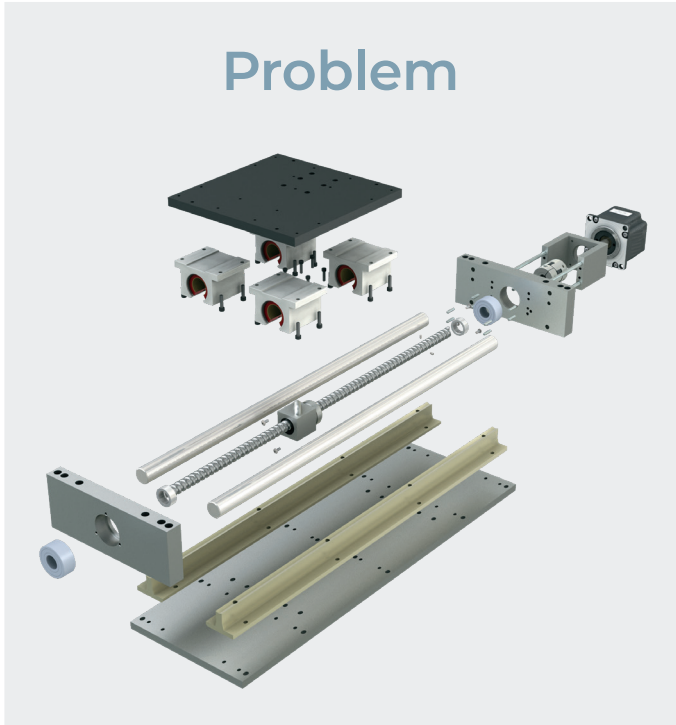
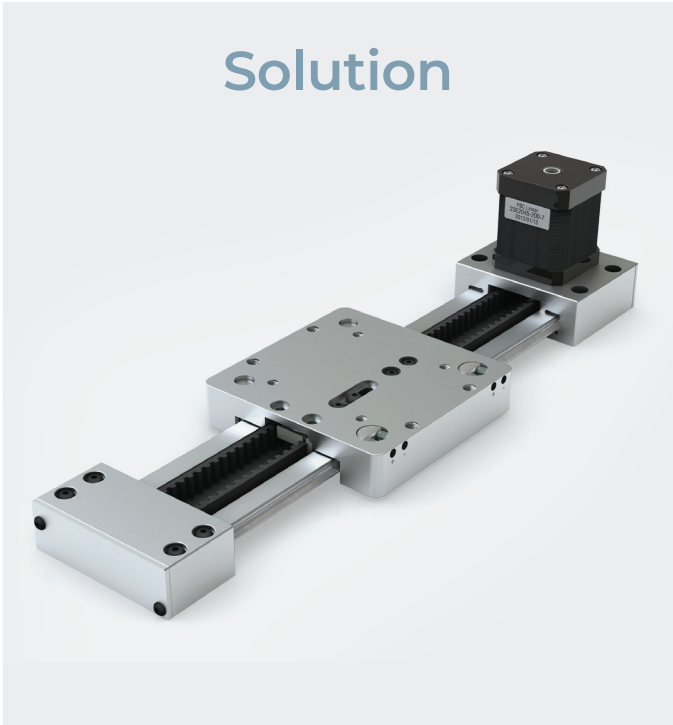


# Engineered Solution with **SIMO**

## Problem



## Solution



21

Components  
Plus Fasteners

VS

1

Engineered  
Solution

### Design Problems

- May not be optimized design for linear motion
- Multiple component purchase points
- Complex alignment and assembly process
- High labor and overhead costs

### Engineered Solution from PBC Linear

- Error proofed, optimized linear motion
- Pre-engineered alignment
- SIMO® precision machined for qualified straight rails
- Lower overall cost with complete assembly
- Significantly reduced assembly time
- Free up your time to focus on other priorities

Improve Life & Reliability | Enhance Performance | Reduce Part Count  
Lower Overall Costs | Reduce Risks | Streamline Assembly

Learn more about our solutions at [pbclinear.com](http://pbclinear.com) or call 1-800-962-8979  
6402 E. Rockton Road • Roscoe, IL 61073 USA

The data and specifications in this publication have been carefully compiled and are believed to be accurate and correct. However, it is the responsibility of the user to determine and ensure the suitability of PBC Linear® products for a specific application. PBC Linear® only obligation will be to repair or replace without charge, any defective components if returned promptly. No liability is assumed beyond such replacement. Specifications are subject to change without notice. LITSIMO-006 rev0423

