

SLEW RING BEARINGS



Rotational Bearings

Slew Ring Bearings, also known as Slewing Bearings, offer intermittent rotation under large radial, axial and moment loads. They consist of an inner ring and an outer ring, typically face-mounted with bolt hole patterns. Slew rings are composed of steel, stainless steel, or polymer.

PBC Linear specializes in Slewing Bearings with outside diameters ranging from 80 mm to 310 mm which are ideal for solar panels, medical equipment, robots, radar and satellite antennas, and more. Our Slew Ring Bearings are in stock and ready to ship from our US headquarters.

To fulfill various application needs, we are offering a line of ball bearing and polymer slew ring bearings. See their features and benefits below to assist in choosing the best product line for your application.

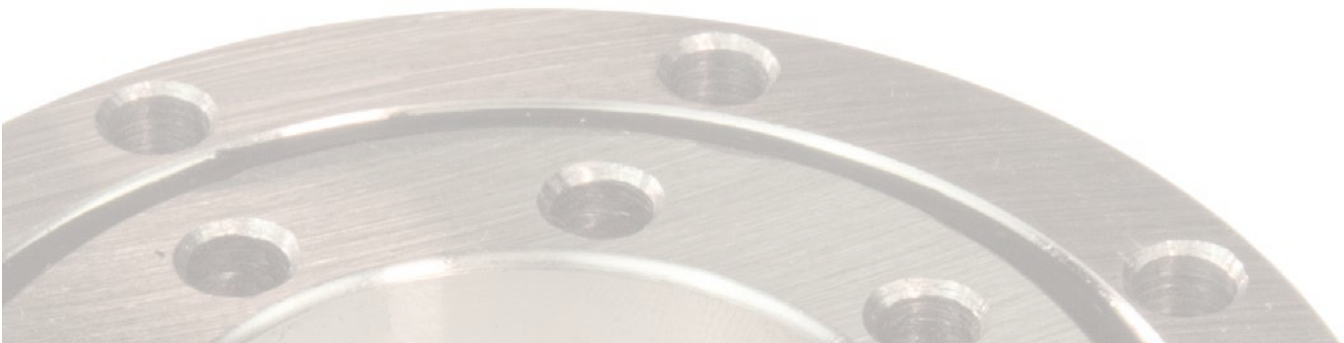


Ball Bearing Series Features & Benefits

- **Versatile Performance:** Excels in applications ranging from light to heavy loads.
- **Superior Load Handling:** Deep groove raceways and maximum size balls provide higher torque, thrust, and radial load capacity compared to standard four-point contact ball bearings.
- **High Stiffness:** Offers exceptional rigidity for demanding bearing applications.
- **Cost-Effective:** Delivers an excellent price/performance ratio.
- **Excellent Durability:** Ensures a long service life.
- **Enhanced Protection:** Larger seals and non-contact dust covers on the bearing grooves effectively block contaminants.

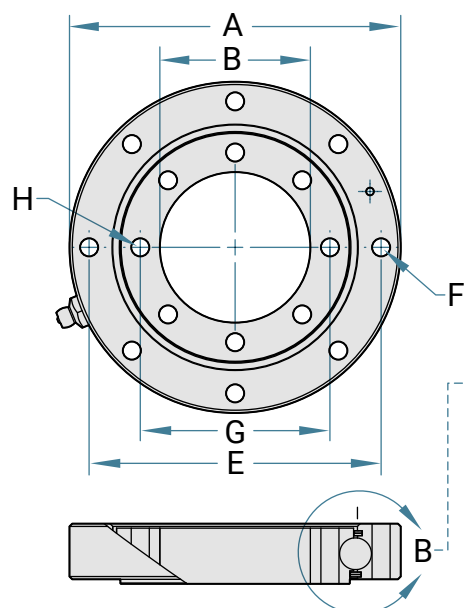
Polymer Series Features & Benefits

- **Self-Lubricating:** Slewing Bearings are a good solution for clean rooms and hard-to-reach areas because of their oil-free design.
- **Maintenance-Free Operation:** These bearings do not require regular maintenance, which reduces downtime and labor costs.
- **Longevity:** With low-friction, replaceable sliding pads, these bearings offer extended service life.
- **High Load Capacity:** Self-lubricating slewing rings retain all the benefits of traditional slewing rings, including their ability to handle high loads and intermittent rotation.
- **Versatility:** Suitable for a wide range of applications, from robotics to food processing.



MT Series Ball Bearing Slew Ring Bearings

MT Series slewing bearings offer optimal economy and capacity for diameters up to 310 mm. The heavy-duty steel bearings, with their rectangular cross-section, serve as an economical replacement for kingpost designs. The deep groove raceways and maximum size balls provide higher moment, thrust, and radial load capacities than typical four-point contact slewing rings. The bearing grooves are also equipped with larger seals and non-contact dust covers that help block contaminants.



NOTE: The threaded slew ring option has a product number ending in **T** instead of **N**.

SRB-BMT-0050-0110-STNN



SRB-BMT-0065-0135-STNN



SRB-BMT-0122-0226-STNN



SRB-BMT-0143-0249-STNN



SRB-BMT-0145-0300-STNN



SRB-BMT-0145-0312-STNL



SRB-BMT-0170-0310-STNN



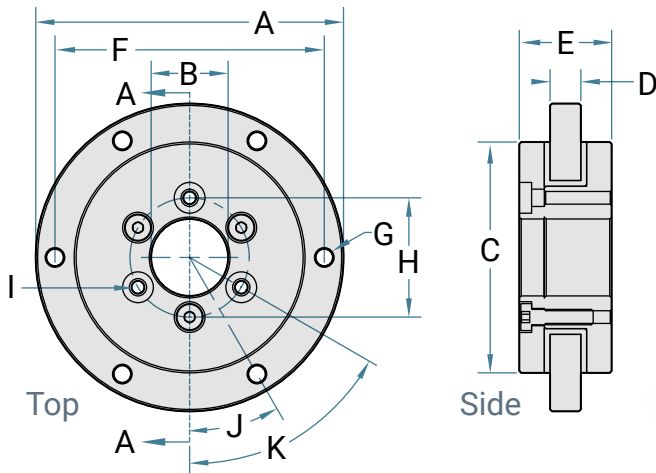
In Stock Toothless Slewing Bearings

Part Number	External Dimensions (mm)				Outer Ring Mounting Hole (mm)			Inner Ring Mounting Hole (mm)			Weight Approx. (kg)	Rated Torque (Nm)
	A Outer Diameter	B Inner Diameter	C Overall Height	D Inner/Outer Ring Height	E Length	Number of Holes	F Bore Diameter	G Length	Number of Holes	H Bore Diameter		
SRB-BMT-0050-0110-STNN	110	50	20	18	97	8	6.60	63	8	6.60	0.91	915
SRB-BMT-0050-0110-STNT	110	50	20	18	97	8	M6	63	8	M6	0.91	915
SRB-BMT-0065-0135-STNN	135	65	22	20	120	8	8.99	80	8	8.99	1.81	1,458
SRB-BMT-0065-0135-STNT	135	65	22	20	120	8	M8	80	8	M8	1.81	1,458
SRB-BMT-0122-0226-STNN	226	122	34	29	208	12	8.99	140	12	8.99	5.99	6,806
SRB-BMT-0122-0226-STNT	226	122	34	29	208	12	M8	140	12	M8	5.99	6,806
SRB-BMT-0143-0249-STNN	249	143	34	29	227	12	11.00	165	12	11.00	6.80	12,135
SRB-BMT-0143-0249-STNT	249	143	34	29	227	12	M10	165	12	M10	6.80	12,135
SRB-BMT-0145-0300-STNN	300	145	50	44	270	16	14.27	175	16	14.27	16.78	35,251
SRB-BMT-0145-0300-STNT	300	145	50	44	270	16	M16 x 1.5	175	16	M16 x 1.5	16.78	35,251
SRB-BMT-0145-0312-STNL	312	145	50	44	270	16	15.09	175	16	15.09	18.60	41,488
SRB-BMT-0170-0310-STNN	310	170	46	41	280	12	13.00	200	12	13.00	14.97	22,398
SRB-BMT-0170-0310-STNT	310	170	46	41	280	12	M12	200	12	M12	14.97	22,398

Note: Additional Slewing Bearings available, visit pblinear.com or contact an application engineer at application.engineering@pblinear.com

P03 Polymer Series Slew Ring Bearings

The P03 polymer slewing ring bearing is designed for easy installation, featuring replaceable self-lubricating sliding pads. The inner and outer rings are anodized aluminum, with an option for stainless steel rings. Ideal for high-load applications and maintenance-free. This is achieved using standard sliding pads made from, a self-lubricating polymer. Additionally, grease-free options are available with sliding pads made from FDA-grade, high-temperature, or ESD material.



SRB-P03-0020-0080-ALNN-E1

SRB-P03-0030-0100-ALNN-E1

SRB-P03-0050-0150-ALNN-E1

SRB-P03-0060-0160-ALNN-E1

SRB-P03-0100-0185-ALNN-E1

SRB-P03-0150-0250-ALNN-E1

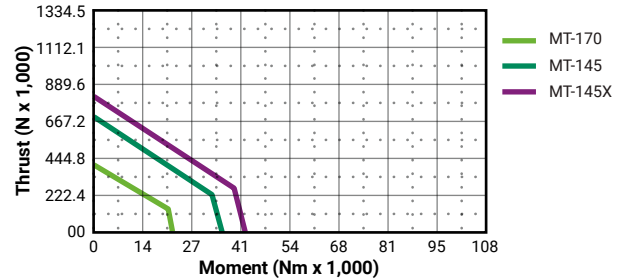
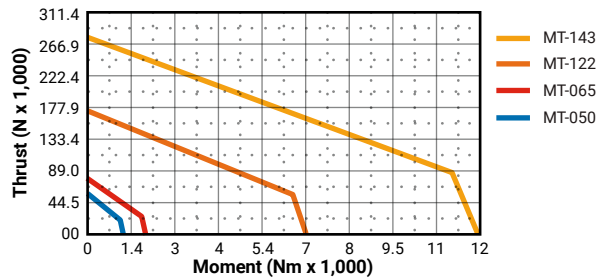
SRB-P03-0200-0300-ALNN-E1

In Stock Polymer Slewing Bearings

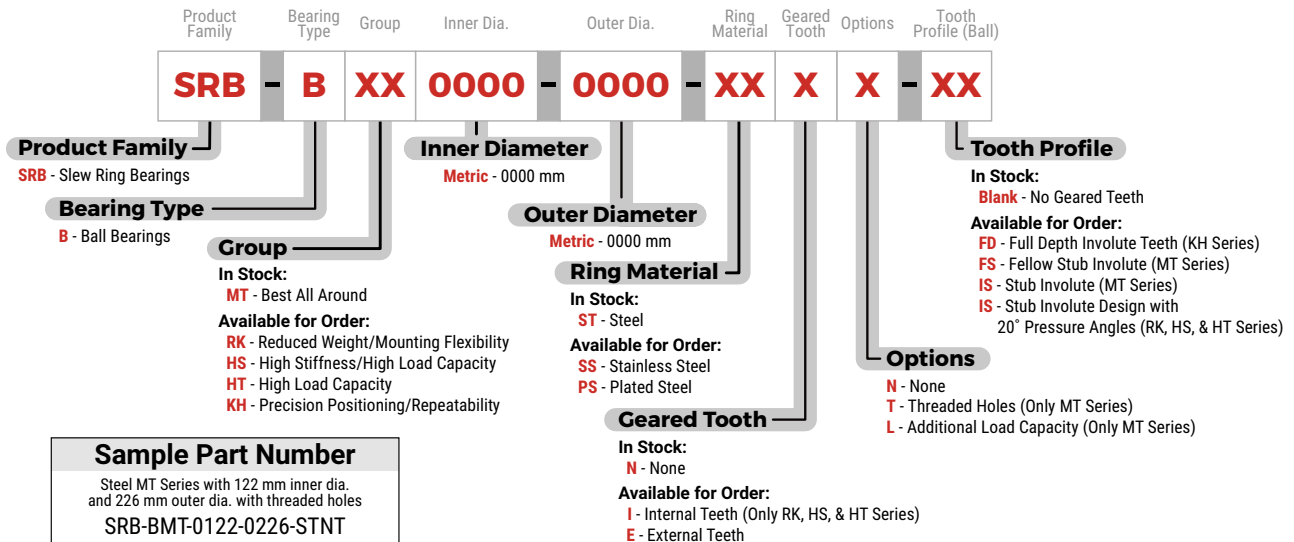
Part Number	External Dimensions (mm)					Outer Ring Mounting Hole (mm)			Inner Ring Mounting Hole (mm)		
	A Outer Diameter	B Inner Diameter	C Inner Ring Outer Dia.	D Outer Ring Height	E Inner Ring Height	F Bolt Pattern Diameter	Number of Holes	G Bore Diameter	H Bolt Pattern Diameter	Number of Holes	I Bore Diameter
SRB-P03-0020-0080-ALNN-E1	80	20	60	8	24	70	6 x 60°	4.5	31	6 x 60°	M4
SRB-P03-0030-0100-ALNN-E1	100	30	82	10	29	91	8 x 45°	4.5	42.5	8 x 45°	M4
SRB-P03-0050-0150-ALNN-E1	150	50	120	10	33	135	16 x 22.5°	6.6	65	8 x 45°	M6
SRB-P03-0060-0160-ALNN-E1	160	60	130	10	33	145	20 x 18°	5.5	74	10 x 36°	M5
SRB-P03-0100-0185-ALNN-E1	185	100	160	12	34	170	16 x 22.5°	5.5	112	12 x 30°	M5
SRB-P03-0150-0250-ALNN-E1	250	150	220	12	35	235	16 x 22.5°	5.5	165	12 x 30°	M5
SRB-P03-0200-0300-ALNN-E1	300	200	274	15	38	285	16 x 22.5°	6.6	215	12 x 30°	M6

Part Number	Max Static Load (N)		Max Dynamic Load (N)		MAX Permitted Overturning Moment (Nm)	Weight Approx. (kg)	MAX Rotation Speed (rpm)
	Axial	Radial	Axial	Radial			
SRB-P03-0020-0080-ALNN-E1	15,000	2,300	4,000	600	100	0.2	300
SRB-P03-0030-0100-ALNN-E1	27,000	5,000	7,000	1,500	200	0.4	250
SRB-P03-0050-0150-ALNN-E1	40,000	8,000	10,000	2,500	600	1.0	200
SRB-P03-0060-0160-ALNN-E1	50,000	10,000	15,000	3,000	800	1.1	180
SRB-P03-0100-0185-ALNN-E1	55,000	16,000	16,000	5,000	1,500	1.3	150
SRB-P03-0150-0250-ALNN-E1	80,000	25,000	25,000	8,000	2,000	2.2	100
SRB-P03-0200-0300-ALNN-E1	100,000	45,000	30,000	10,000	3,800	3.2	80

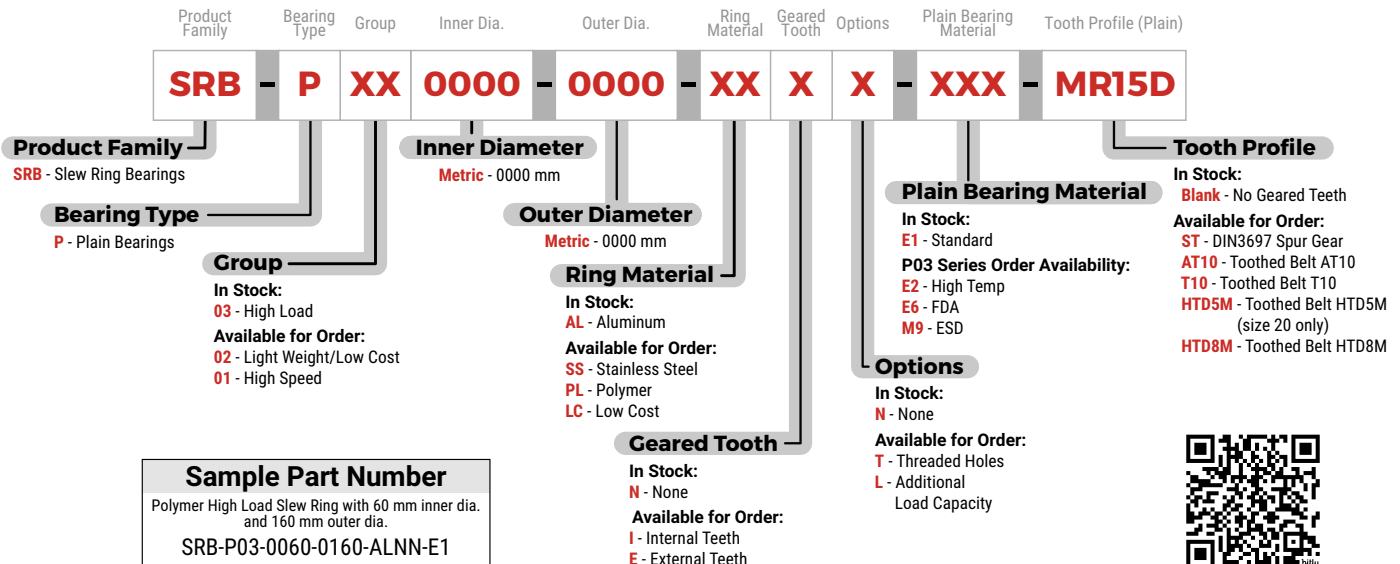
MT Series Load Charts & Part Number Charts



Ball Bearing Slew Rings



Polymer Slew Rings



Visit the Product Feature Page

Visit pbclinear.com for Product Information

Call 1-800-962-8979 for Technical and Application Information

The data and specifications in this publication have been carefully compiled and are believed to be accurate and correct. However, it is the responsibility of the user to determine and ensure the suitability of PBC Linear® products for a specific application. PBC Linear only obligation will be to repair or replace without charge, any defective components if returned promptly. No liability is assumed beyond such replacement. Specifications are subject to change without notice. LITSB-001 v4 081125