

# Pacific Bearing Corp<sup>®</sup>

## Engineering Your Linear Motion Solutions

The goal of Pacific Bearing is to provide innovative solutions through the development and manufacturing of linear motion components, mechanical sub-assemblies and customized systems to meet customers' application and product needs.



## Background

Prodo Mach Corporation, the predecessor to Pacific Bearing, was incorporated December 1962 in Rockford, Illinois, before changing its name to Premac, Inc in 1963. Premac originally manufactured ball valves through the 1960s and 70s.



Premac was purchased by the Schroeder family in 1981 and was nearing bankruptcy by 1982. The owner, Robert Schroeder, incorporated the "Pacific Bearing Company" in 1983 in an attempt to dissociate the business from the Rust Belt. During the 1980s, the reformed company shifted focus from metalworking to bearing manufacturing. Its first bearing product was a line of self-lubricating bearings.

By the turn of the century, Pacific Bearing had expanded its product offerings of components and expanded into actuators and subassemblies. Additionally the company developed reciprocal trade agreements with manufacturers in Japan and Europe, expanding the range of products it could offer and opening new markets for its own products overseas.

## Range of Offerings



Components



Mechatronics



Automation and 3D Printing

## Quick Facts

### Headquarters

Roscoe, Illinois, USA

### Manufacturing Floor Space

200,000 ft<sup>2</sup>

### Personnel

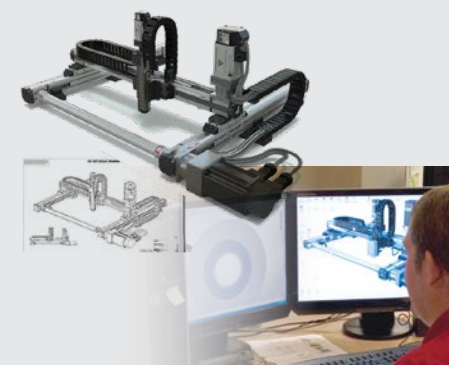
220 Employees Globally

### Linear Motion Applications

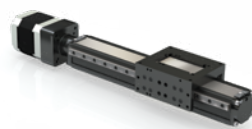
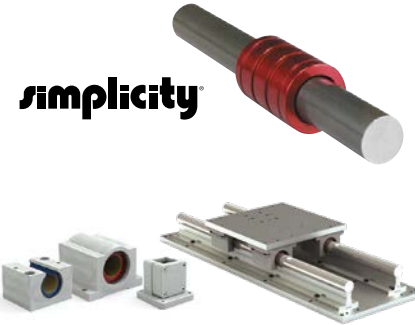
- Digital Print, Scan, Etch
- Kiosk & Automated Retail
- Medical Equipment
- Lab Automation
- Packaging
- Military Applications

### Core Operational Capabilities:

- FMS machining center lines
- 24/7 production lines
- CNC Machines
- Horizontal/Vertical Mills
- CNC Turning
- ID & OD Centerless Grinding
- Patented SIMO® Process (Simultaneous Integral Milling Operation)
- Finite Element Analysis (FEA)
- Failure Modes and Effects Analysis (FMEA)
- Design Resources and Product Recommendations
- Rapid Prototyping
- Water Jet Capabilities



# Pacific Bearing®



- 1983 • Pacific Bearing Company is founded by CEO Robert Schroeder
- 1985 • Mr. Bob Schroeder invents the first self-lubricating plain bearing
- 1986 - 96 • Simplicity product line expands to include pillow blocks, linear slides and shafting
- 1997 • PBC Headquarters relocated to 150,000 ft<sup>2</sup> facility in Roscoe, Illinois
- Redi-Rail and Hevi-Rail products are launched
- 2000 • Uni-Guide two piece modular guides is introduced to the market
- 2003 • Mini-Rail® miniature linear guides released to market
- 2006 • V-Rail introduced
- 2007 • MTB Actuators and Commercial Rail introduced
- 2008 • PBC Lineartechnik GmbH established to meet the needs of the European market
- Patent Pending Integral-V™ technology is introduced at the renowned Hannover Messe tradeshow in Germany
- Pacific Bearing Co. d.b.a. PBC Linear to better represent their actuator offerings in the linear motion market
- 2009 • ML - Miniature Linear Actuator Series offers new opportunities for lab automation, biotech and compact applications
- 2010 • Low Profile Uni-Guide (UGA) is introduced, offering the same Uni-guide advantages, but in a compact 24 mm height profile

- 2022 • 8-machine, \$5 million Flexible Manufacturing System (FMS) installed in the high bay of our South Building
- 2022 • New Miniature Metric Ballscrews offer opportunities for sophisticated medical applications and more
- 2021 • Cobot Feeder is introduced through Applied Cobotics to significantly boost cobot production
- 2020 • Applied Cobotics is created to bring automation solutions to the shop and to customers
- 2019 • PBC expands 66,000 ft<sup>2</sup> with new building at their main location & PBC LinearTechnik GmbH renamed to PBC Linear Europe GmbH
- 2017 • PBC Linear introduces Lead Screw Assemblies
- 2015 • PBC + Moons' joint venture founded
- 2014 • 3D Platform is founded to provide large format 3D printers to the manufacturing market
- 2013 • PBC acquires LEE Controls LLC and introduces CS Compact Series actuators
- 2012 • PBC Linear introduces SIMO® Series Linear Motion Platform and Constant Force™ Tech
- 2011 • Major manufacturing expansion of an additional FMS machine and a total of 130 pallets
- PBC achieves AS9100C certification utilized by the aerospace and defense industries as well as ISO9001 certification



## Pacific Bearing was Founded by Engineers for Engineers

### Looking to the Future

Pacific Bearing will continue its expansion into global markets with existing and new linear motion products that aim to fulfill customers' changing demands. We will engineer and integrate new possibilities into factories across North America and beyond. And, we will continue to aspire to gain our customers' trust.

### Core Competencies

- Full line of ground-breaking linear motion products that simplify application and reduce costs
- 24/7 in-house manufacturing allows us to ensure quality control and quick, on-time delivery
- PBC has a significant Patent Estate including:
  - Pillow Block Housing for a Shaft-Supporting Bearing
  - Linear Rail System with Preload Adjustment
  - Linear Rail System with Preload Adjustment Apparatus
  - Magnetic Thrust Motor
- (16) Patents Pending including:
  - SIMO® (Simultaneous Integral Milling Operation)
  - Integral-V™ Linear Guides
  - MS Ball-Type Manual and Motor Driven System



## Global Footprint



### **PBC Linear Worldwide Headquarters**

6402 E. Rockton Road  
Roscoe, Illinois 61073 USA

### **PBC Linear Europe GmbH European Headquarters**

Bonner Straße 363  
40589 Duesseldorf, Germany

### **PBC-MOONS China Headquarters**

168 Mingjia Road, Minhang District  
Shanghai 201107, P.R. China

# **Pacific Bearing Corp**<sup>®</sup>

6402 E. Rockton Road • Roscoe, IL 61073 USA • +1.800.962.8979 • +1.815.389.5600  
[pacificbearing.com](http://pacificbearing.com) • [pbcllinear.com](http://pbcllinear.com) • [leelinear.com](http://leelinear.com) • [3dplatform.com](http://3dplatform.com)